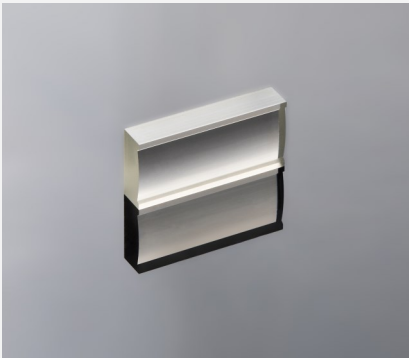


# Slow Axis Collimator



## Features and Advantages

Acylindrical lens for the collimation of the slow axis of diode lasers.

## Product Specifications

Product Code	ZLE000104 <sup>(1)</sup>	
Specification Data	Unit	Value
Material		S-TIH53 (Ohara)
Length (L)	mm	15.0 ± 0.05
Width (W)	mm	7.0 ± 0.05
Thickness (Te)		2.81 ± 0.05
Clear Aperture (A <sub>l</sub> x A <sub>w</sub> )	mm <sup>2</sup>	12.0 x 3.0
Refractive Index n @ 808 nm		1.823
Effective focal length EFL @ 808 nm	mm	14.22 (radius 11.7 ± 0.5)
Back focal length BFL @ 808 nm	mm	12.68
NA		< 0.2
Standard Coating - AR	nm	790 - 990
Transmission	%	> 99
Surface imperfections (DIN ISO 10110-7)		5/ 5×0.063; C4×0.25; L4×0.063; E0.5

<sup>(1)</sup> Example for customization – design, dimensions, coatings & bottom tabs for mounting on request.

## Product Drawing (mm)

